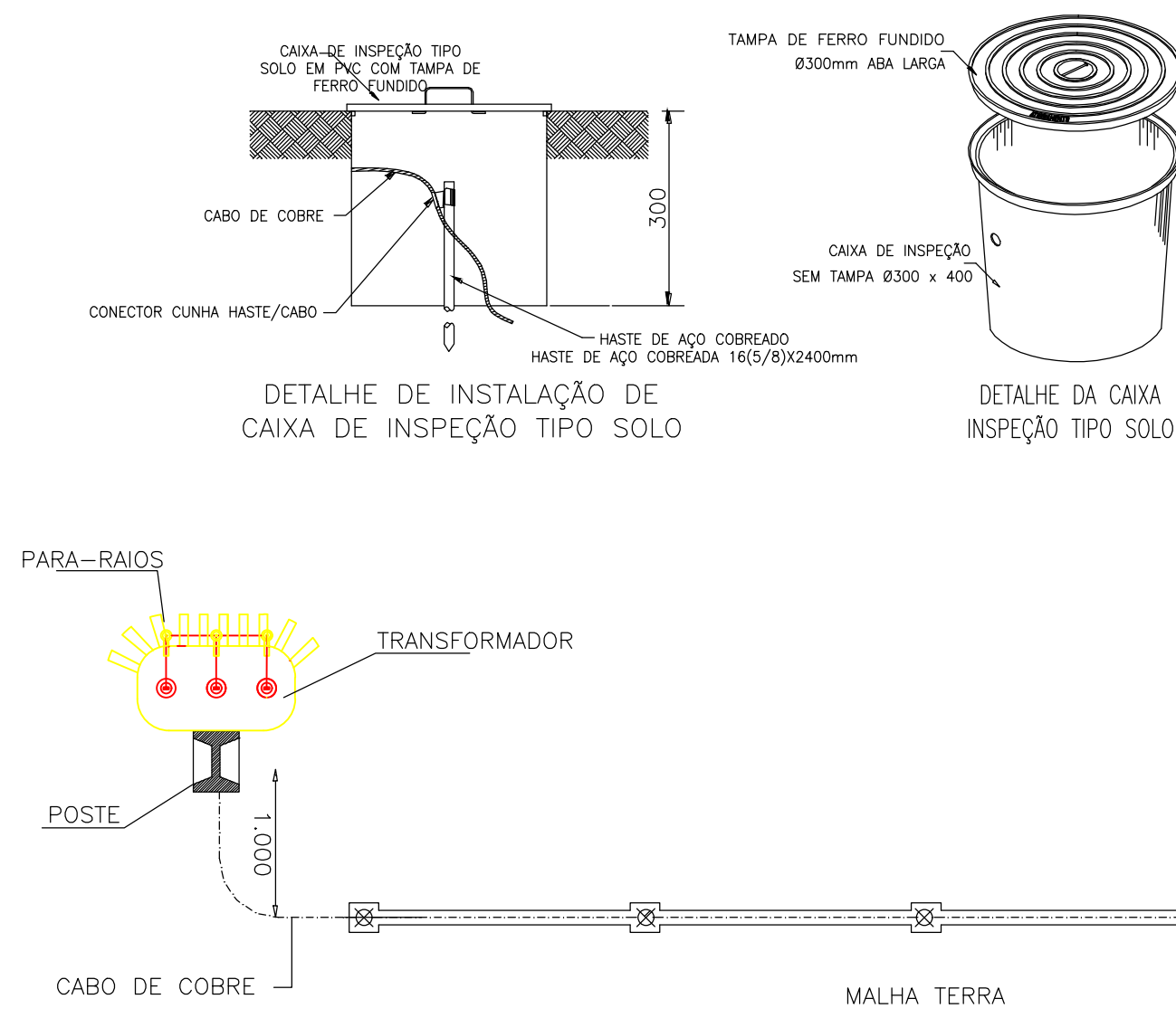
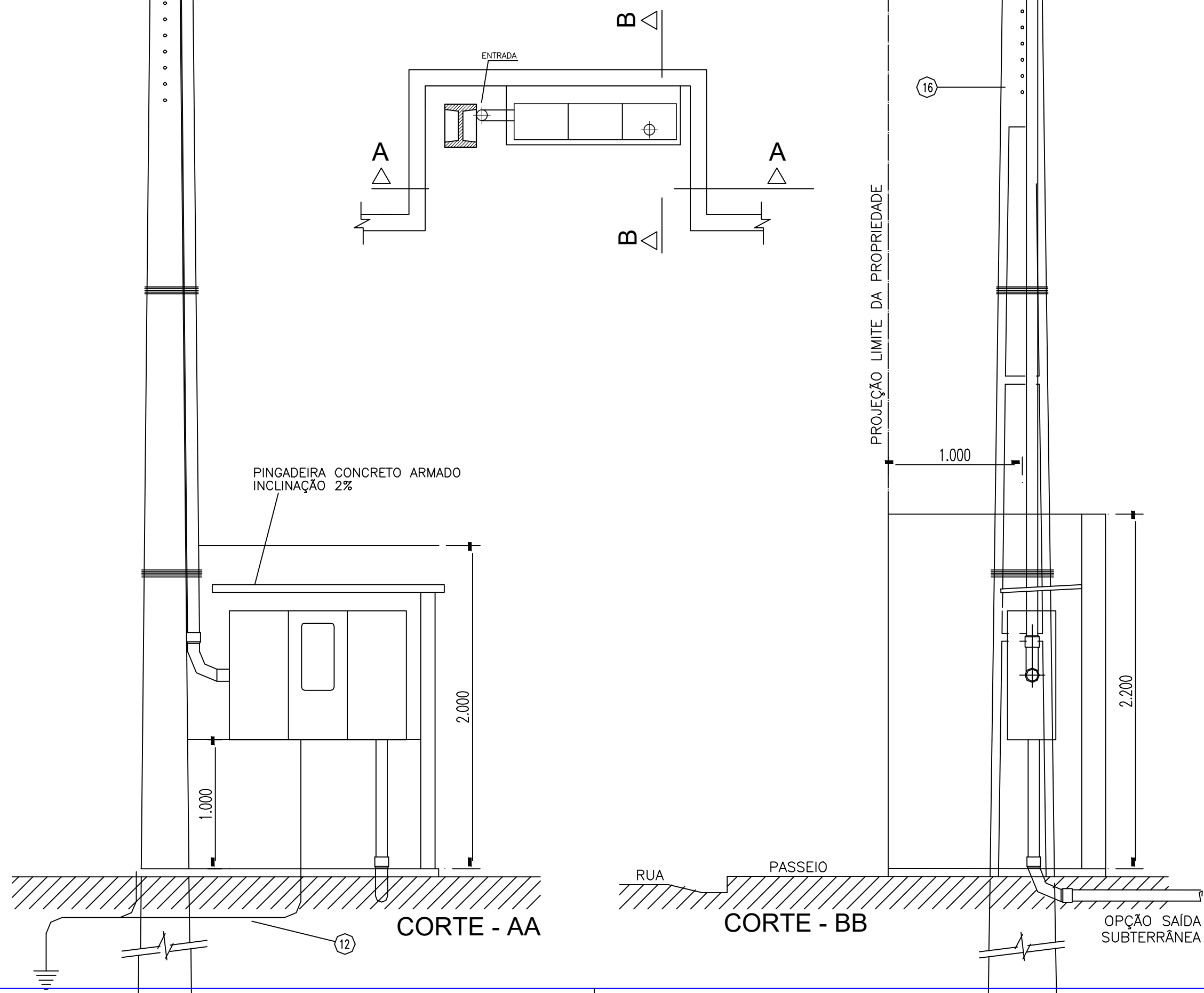
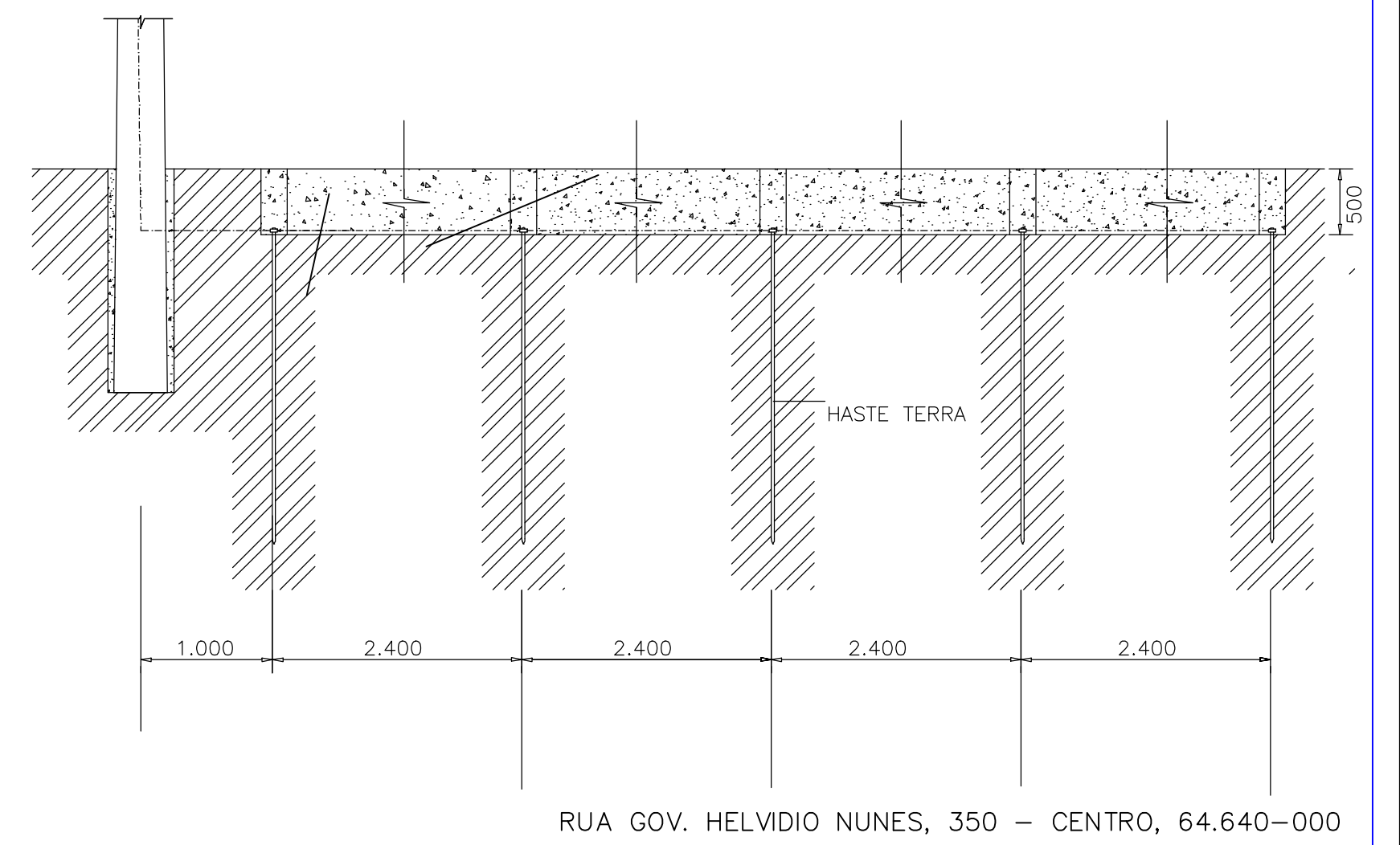


The diagram shows a power transformer with a central vertical core. The primary winding is on the left leg, and the secondary winding is on the right leg. A cross-connection is shown between the two legs, with a winding on the central vertical core. The diagram is labeled with 'a' through 'f' at various points, indicating specific terminals or components.

Paulo Henrique M. de Moura
PAULO HENRIQUE MARQUES DE MOURA
ENGENHEIRO ELETRICISTA/SEDUC-PI
CREA RN 1919129820

[illegible]

OBS: A RESISTÊNCIA MÁXIMA PARA MALHA DE TERRA SERÁ DE 10Ω

[illegible]